

MA48LWD

conductivity measurement and display device



The MA48LWD is a high-resolution conductivity measurement and display device. It is equipped with a digital display and a potentiometer for cell adjustment. The compact design according to DIN IEC 61554 is made of flame-retardant noryl and designed for panel mounting. The device is connected by screw-type connectors on the back side.

Features

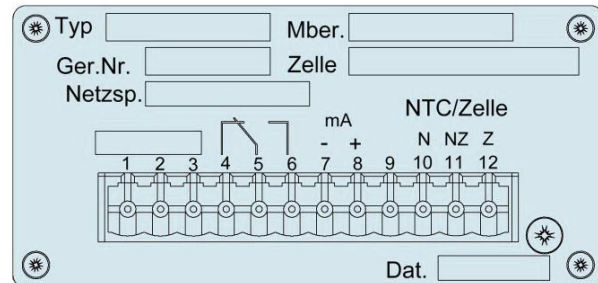
- high-impedance converter for direct connection of a conductivity measuring cell
- 3 ½-digit LCD display, digit height 12.7 mm
- precise cell adjustment by potentiometer
- selectable measuring range
- selectable current output
- selectable power supply
- selectable temperature compensation
- quick and easy installation in the panel outbreak via spring clips that can be attached to the housing wall

Application fields

- swimming pools, fish farming and breweries
- sewage treatment plants, landfills and power plants
- continuous and batch waste water treatment plants
- pure and ultra-pure water plants, desalination and recirculation systems
- exhaust systems
- final inspection and monitoring

Connections

No.	Description
1	power supply
2	power supply
3	power supply
4	not assigned
5	not assigned
6	not assigned
7	0 to 20 mA / 4 to 20 mA (-)
8	0 to 20 mA / 4 to 20 mA (+)
9	not assigned
10	NTC (N)
11	NTC / cell (NZ)
12	cell (Z)



Technical data

Parameter	Description	Order code: MA48LWD-
measuring range (factory set, other ranges on request)	0 to 200 $\mu\text{S}/\text{cm}$, $K = 0.1 \text{ cm}^{-1}$	M020/0.1
	0 to 2000 $\mu\text{S}/\text{cm}$, $K = 0.1 \text{ cm}^{-1}$	M2/0.1
resolution	0.05 %	
measuring voltage	0.14 V AC, $\pm 20 \%$	
voltage supply	230 V AC, 50–60 Hz / 6 VA, -15 % to +10 %	230AC
	120 V AC, 50–60 Hz / 6 VA, -15 % to +10 %	120AC
	24 V AC	24AC
	24 V DC	24DC
current output	0 to 20 mA	S0
	4 to 20 mA	S4
max. load	600 Ω	
temperature compensation	none	-
	automatic, by NTC in measuring cell (2 %/°C)	AT
front	3 ½-digit LCD display, digit height 12.7 mm	
	potentiometer for adjustment cells $\pm 15 \%$	
connection	12-pin screw terminal	
dimension	96 mm x 48 mm x 150 mm (W x H x D incl. connectors)	
panel cut out	91.3 mm x 45.2 mm, $\pm 0.2 \text{ mm}$	
permitted storage and operating conditions	0 to +40 °C, < 80 % RH	
permitted degree of pollution	2 (according to DIN EN 60664-1)	
protection	front: IP40	
	rear: IP20	

Please specify the selected measuring range, current output, power supply and whether a temperature compensation is desired when ordering. Specifications subject to modifications.